

MAPPING ENTREPRENEURIAL COMPETENCIES

VITA KADILE & NICKY KINSEY

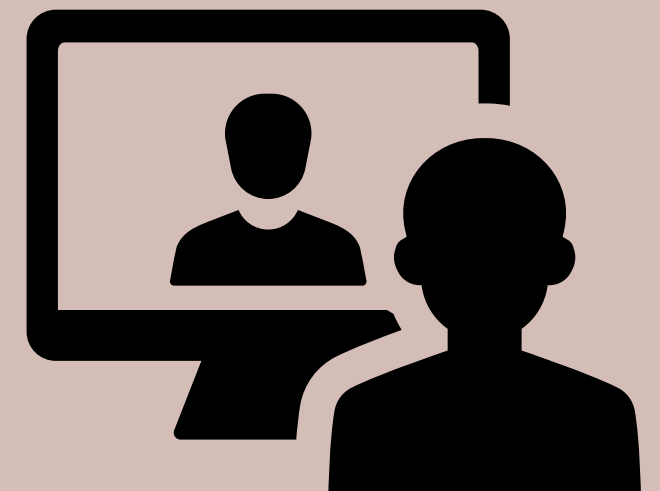
Entrepreneurs

Individuals with experience in creating and running businesses across a variety of industries



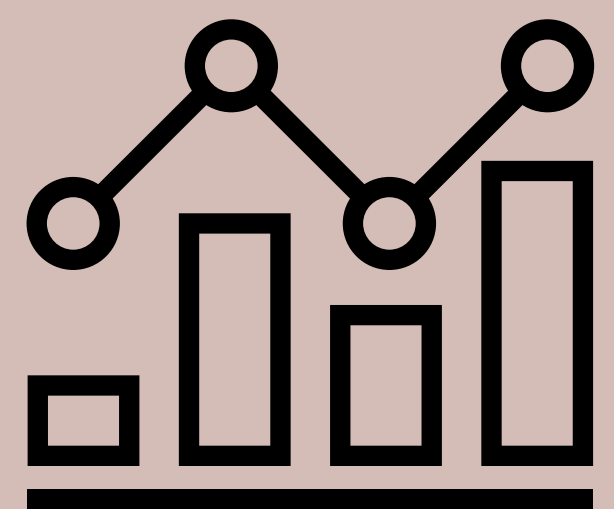
Interviews

One-to-one semi-structured interviews to ascertain the sorts of competencies used to create and develop their businesses



Analysis

Coding the interview data using NVivo revealed patterns in the types of competencies entrepreneurs relied on most heavily



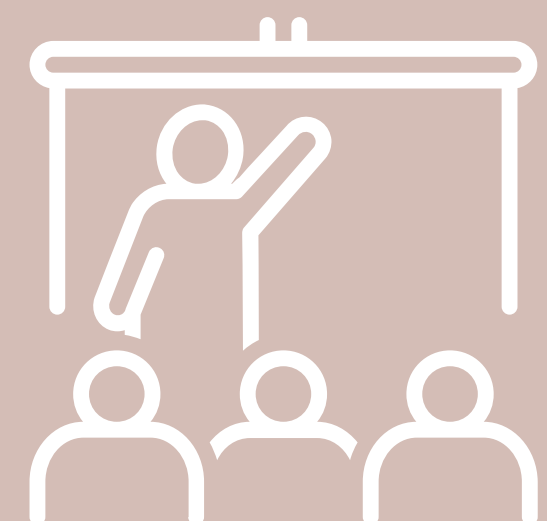
Literature Review

Collection and analysis of academic literature on entrepreneurship pedagogy and research with the focus on existing competence-based approaches



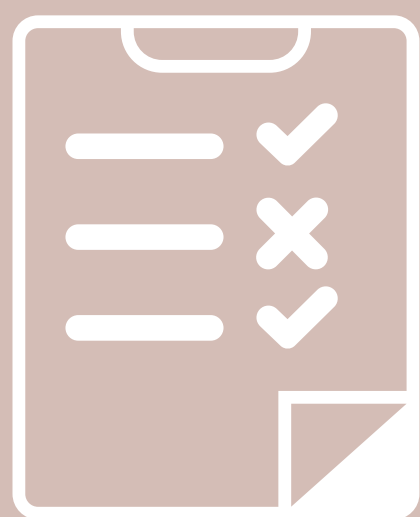
University

Taught Enterprise curriculum content at UG and PG levels. An overview of the top 200 UK and International University Enterprise curriculum offerings



Student Survey

Collecting survey responses from current Enterprise students to uncover the most pertinent content in Enterprise Education



Implications

By identifying the most significant Entrepreneurial competencies required to establish and succeed in business, we aim to map these competencies onto the offering of current academic institutions and put forward recommendations for improving Enterprise education offerings



UNIVERSITY OF LEEDS

Leeds University Business School